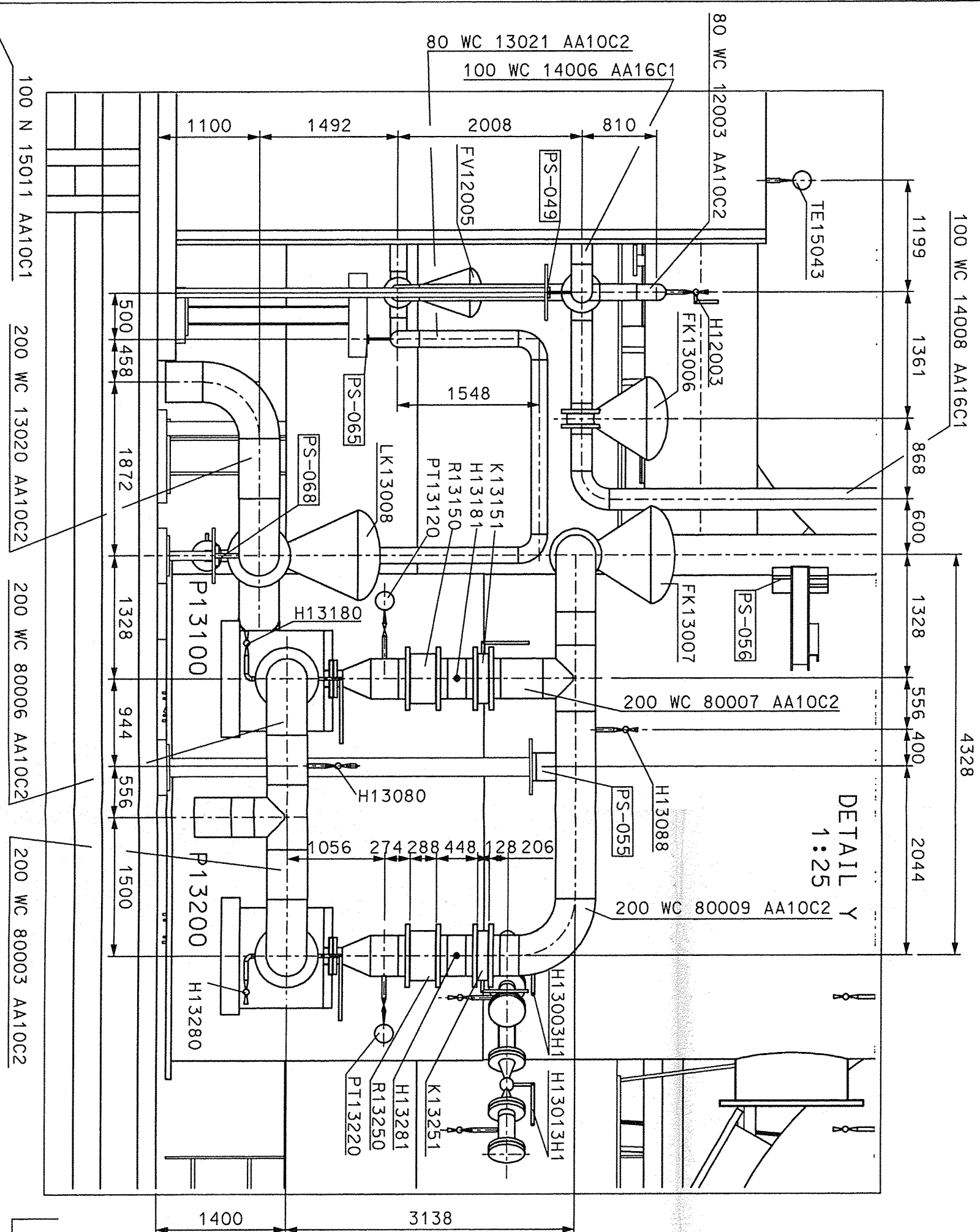
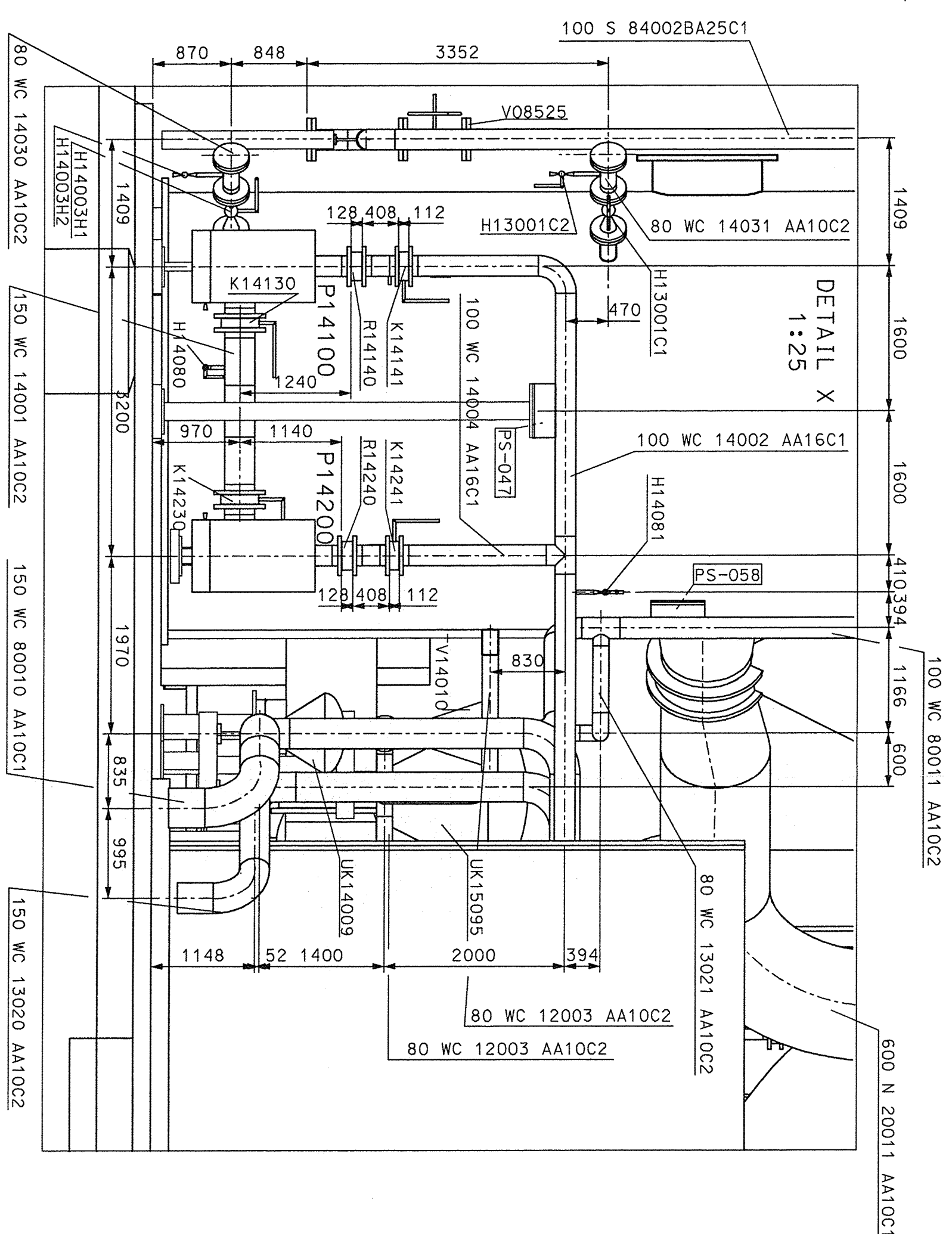
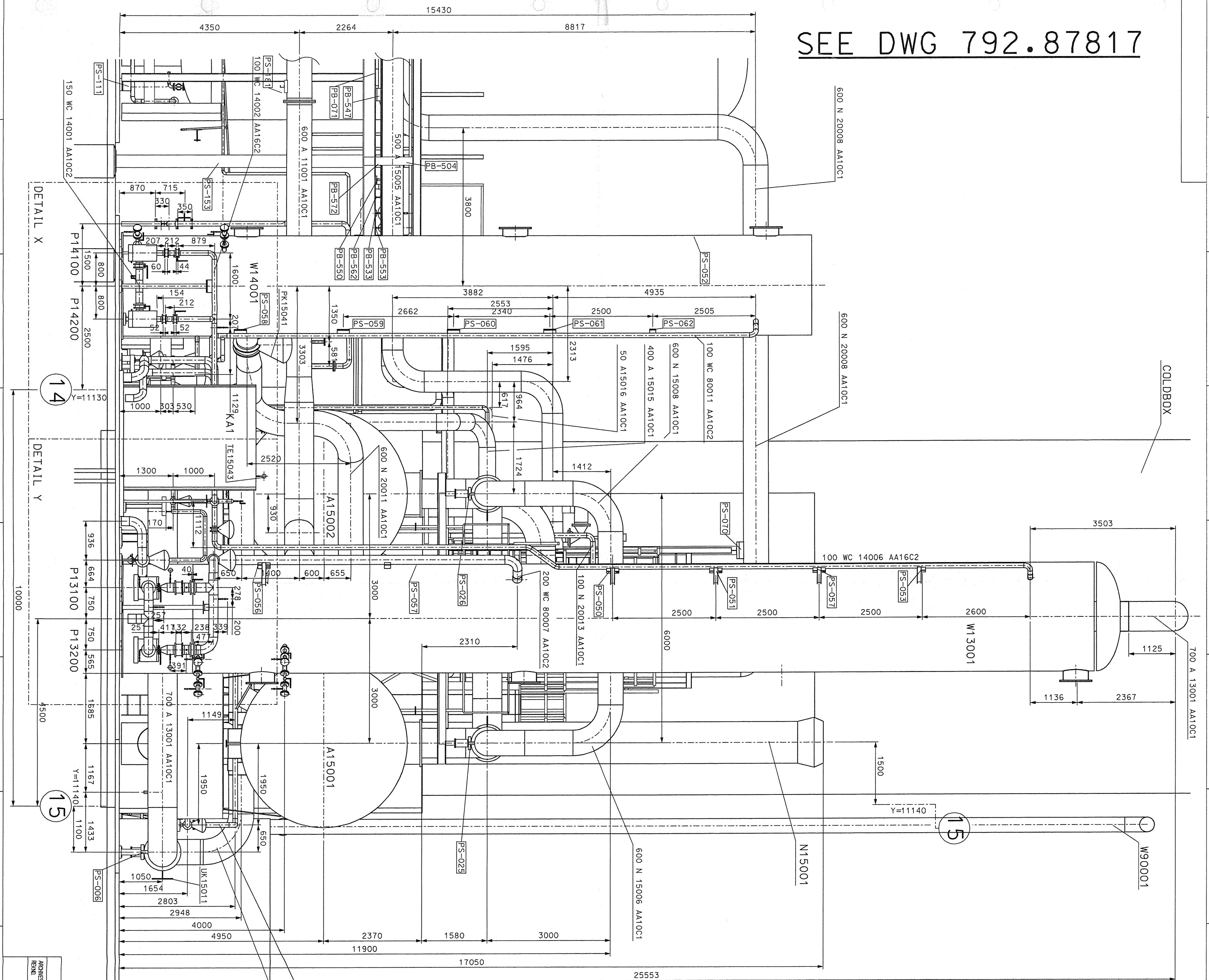


SEE DWG 792.87817




LEVELS

TOP OF INTERNAL ROADS: 225.00m n. m.

TOP OF FOUNDATION: 225,10m

BOTTOM OF STEEL STRUCTURE: 225,15 = +0,00

Projek-Nr.	90503300	OLF-Code	RP60902	Druck-Nr.	90503300-609-1	Rev.	00
Rev.	gezeichnet	gezeichnet	2019	Druck-Nr.	Air Liquide AOS		Reparaturgeschäftsstell für die Abrechnung
	Datum	Datum	1205	05.07.05	Kosten AS/Nr. 05		

# 7 AIR LIQUIDE

Air Liquide AOS GmbH			
DATE	INVOICE	ORDERED	DELIVERY DATE
2005/06/20	AR	11. JUL. 2005	
JOB CODE	SCALE		
K7000 AS/NZ 9.5kVcpe	500		
REFERENCE	SHEET		
INSTALLATION DRAWING	10		
TITLE	DRAWING NO.		
VIEW W	79287816		
REV	REV		
001	001		